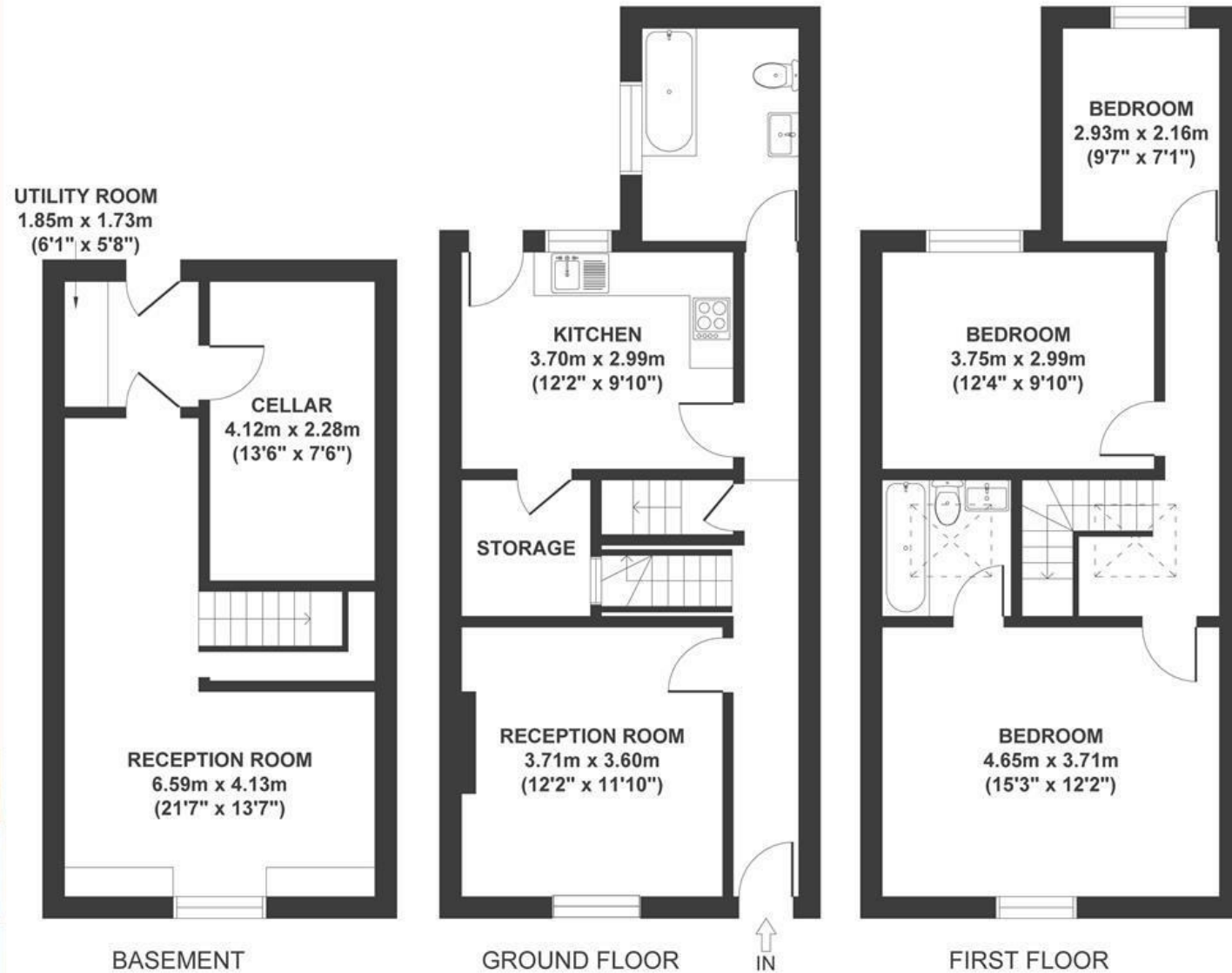


Bower Ashton Terrace ASHTON

APPROXIMATE FLOOR AREA
132 SQM / 1421 SQFT



Boardwalk

Bower Ashton

, BRISTOL



£525,000



BS3 2LE



3 Bedrooms



2 Bathrooms

"We've absolutely loved living here, with the park just moments away and beautiful walks to Ashton Court and Leigh Woods right on the doorstep. It's been a joy to wander down to North Street for its independent coffee shops, vibrant Sunday market, and friendly community feel. Some of our happiest memories are of sunny afternoons spent in the front garden with our daughter — it's a wonderful home in a truly special location."

